

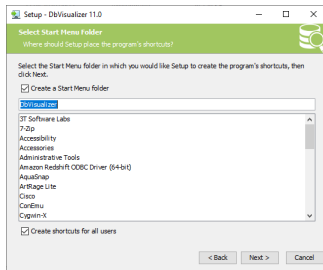
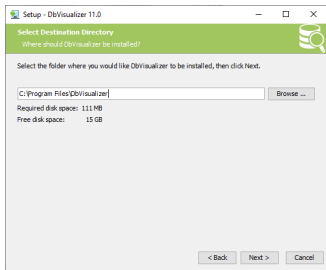
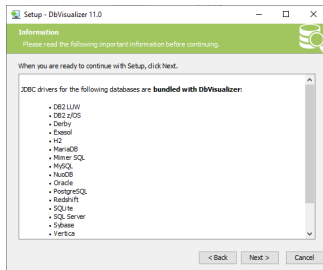
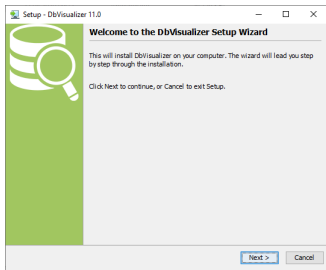
Configure DBVisualizer for Oracle

Data Management and Business Performance Management

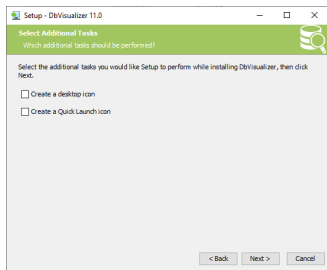
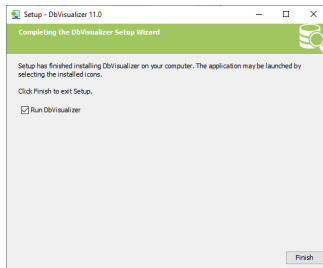
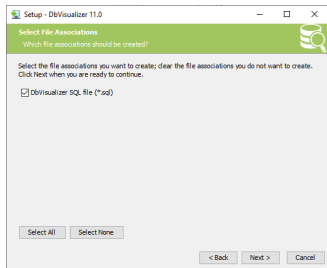
Prof. Dr. Ingo Claßen

Hochschule für Technik und Wirtschaft Berlin

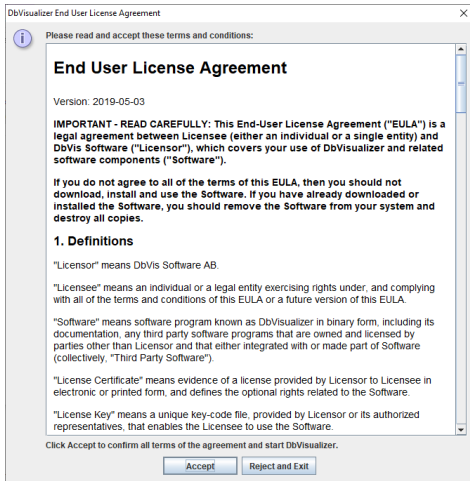
Download and Execute Setup - Keep Default Values



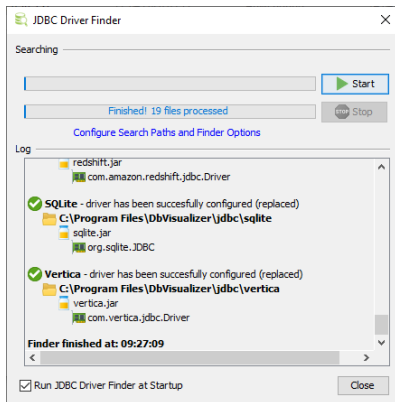
Keep Default Values



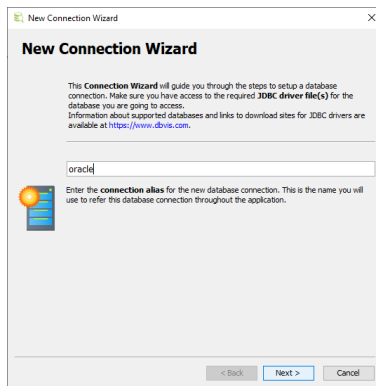
Accept



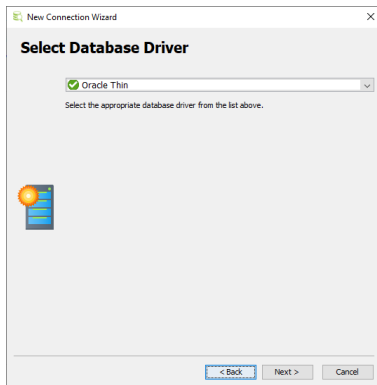
After Driver finder has finished - click close



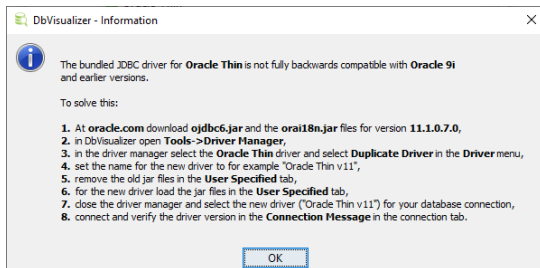
New Connection Wizard starts - enter connection name oracle



Select Oracle Thin Driver



Ignore Message, just click ok



Insert Access Credentials

- ▶ Chose Connection Type SID
- ▶ Goto section *Credentials for Oracle* on my website
- ▶ Open file `access.txt` (contains credentials)
- ▶ Copy entries into form
- ▶ Click Ping Server
- ▶ Click Finish

New Connection Wizard

oracle
Oracle Thin

Connection

Notes

Database

Settings Format Server Info

Connection Type SID <-- Select SID

Database Server <-- Insert here

Database Port 1521

SID <-- Insert here

Authentication

Database Userid <-- Insert here

Database Password <-- Insert here

Change Password

Options

Auto Commit

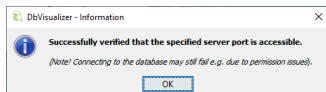
Save Database Password Save Between Sessions

Permission Mode Development

SYS Role

Ping Server

< Back Finish Cancel



Connection Page shows up

The screenshot displays the DbVisualizer Free 11.0 - oracle application window. The main area is titled "Database Connection: oracle" and shows the connection configuration for the "oracle" connection. The connection name is "oracle". The database type is "Oracle", the driver is "Oracle Thin" (checked), and the connection type is "SID". The database server is "1521" and the database port is "1521". The connection message shows "Oracle Database 12c: Enterprise Edition Release 12.2.0.1.0 - 64bit Production" and "Oracle JDBC driver 19.3.0.0.0".

Connections

- oracle
- ANONYMOUS
- APPQOSSYS
- AUDSYS
- CTXSYS
- DBSFUSER
- DBSNMP
- DIP
- DVF
- DVSY
- GGSYS
- GSMADMIN_INTERNAL
- GSMCATUSER
- GSMUSER
- HR
- LBACSYS
- MDDATA
- MDSYS
- OE
- OJMSYS
- OLAPSYS

Database Connection: oracle

jdbroracle@thin@oradb02.f4.htvv-berlin.de:1521:oradb1 Connected - 00:01:06

Connection

Name: oracle

Notes:

Database

Settings Format: Server Info

Database Type: Oracle

Driver (JDBC): Oracle Thin

Connection Type: SID

Database Server: [REDACTED]

Database Port: 1521

SID: [REDACTED]

Reconnect Disconnect Ping Server

Connection Message

Oracle
Oracle Database 12c: Enterprise Edition Release 12.2.0.1.0 - 64bit Production
Oracle JDBC driver
19.3.0.0.0

73M of 512M

Open SQL Window and execute SQL command

The screenshot shows the DbVisualizer Free 11.0 interface. On the left, the 'Connections' tree is expanded to show the 'orade' connection. A dashed arrow labeled '3. click here' points to the 'orade' connection. The main window displays the SQL editor with the query `select * from dual;` highlighted in yellow, with a dashed arrow labeled '2. type here' pointing to the text. Above the editor, a toolbar contains a play button icon, with a dashed arrow labeled '1. click here' pointing to it. Below the editor, the execution results are shown in a table with one row: 'DUMMY' with a value of '1'. The status bar at the bottom indicates '0.016/0.000 sec' and '1/1'.

1. click here

2. type here

3. click here

```
select * from dual;
```

DUMMY
1

0.016/0.000 sec 1/1

If ready with work – close connection

- ▶ Right click on connection

