

# Example ETL Process

## Data Management and Business Performance Management

Prof. Dr. Ingo Claßen

Hochschule für Technik und Wirtschaft Berlin

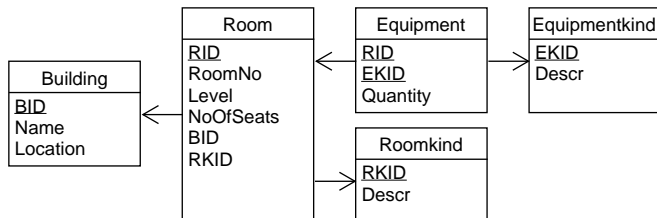
Inro

# Fill Relational Model from Spreadsheet

from

	A	B	C	D	E
1	RoomNo	Level	NoOsSeats	Equipment	Kind
2	A029	1	40	Whiteboard, Beamer, Sound	Lecture Room
3	A030	1	60	Whiteboard, Beamer (2), Sound, Video	Lecture Room
4	A121	2	35	Whiteboard, Beamer	Lecture Room
5	A140	2	35	Whiteboard, Beamer	Lecture Room
6	A210	3	35	Whiteboard, Beamer	Lecture Room
7	A231	3	20	Beamer, PC (20)	PC Room
8					
9					

to



# Overview of ETL-Process (Tool: Alteryx)

